
PTO Equity Spending Committee

— 2022-2023 Recap —

PTO Equity Spending Committee members

- PTO Council Reps
 - Valerie Davisson
 - Helen Makadia
 - Michelle Tsay
- Rajeev Parlikar, School Committee
- Renee McCall, NPS Asst Superintendent of Teaching and Learning
- Steven Rattendi, Director of IT and Library Services
- Andrea Vargas, Peirce Elementary Principal
- Diana Beck, Zervas Elementary Principal

Recap of Accomplishments

- Renamed ourselves the PTO Equity Spending Committee
- Clearly defined Curricular vs Non-Curricular
- Streamlined the SC approval cycle for new guideline recommendations
- Streamlined PTO reporting process
- Implemented a Decision Tree model to adjudicate new spending items
- Made recommendations to NPS about curriculum standard and detailed gift procedures.
- Created a comprehensive PTO Equity Spending slide deck for one stop education and reference
- Formalized attributes and criteria for Performance Series and Performance Series Alternative Programs

Performance Series Attributes (current)

- Performance attributes
 - All schools participate (K-8)
 - All pupils participate (K-8)
 - Same performance for all pupils
 - Performance takes place in the auditorium as an “all school” event
 - Performance Series creates a unified Newton-wide event for all pupils.
- Selection attributes
 - NPS chooses performance/vendor with no input from PTOs
 - NPS negotiates price of performance with no input from PTOs
- Financial attributes
 - Costs billed per pupil (i.e. cost per pupil is the same across all schools), not on number of performances
 - Cost per pupil varies from year to year
 - PTOs have historically paid the entire cost of this program. [Why doesn't NPS contribute?]
 - Cost per school is billed on projected enrollment, sometimes revised to actual enrollment

Performance Series Attributes (revised)

- Performance attributes
 - All schools participate (K-8)
 - All pupils participate (K-8)
 - Same performance for all pupils
 - Performance takes place in the auditorium as an “all school” event
 - Performance Series creates a unified Newton-wide event for all pupils.
- Selection attributes
 - NPS chooses performance/vendor with ~~no input from PTOs~~ **a per pupil upper limit established in advance with input from PTOs**
 - NPS ~~negotiates price of performance with no input from PTOs~~ **presents its selection of the Performance Series program/vendor to PTOs for approval in advance of negotiating a contract with the vendor.**
- Financial attributes
 - Costs billed per pupil (i.e. cost per pupil is the same across all schools), not on number of performances
 - Cost per pupil varies from year to year
 - PTOs have historically paid the entire cost of this program. [Why doesn't NPS contribute?]
 - Cost per school is billed on projected enrollment, ~~sometimes revised to actual enrollment~~

Criteria for Perf Series Alternate Programs

- Performance criteria
 - All schools participate (K-8)
 - All pupils participate (K-8)
 - Same performance for all pupils across a grade (e.g. all 4th graders have the same program)
- Selection criteria
 - NPS chooses performance/vendor with a per pupil upper limit established in advance with input from PTOs
 - NPS presents its selection of the alternate program to PTOs for approval in advance of negotiating a contract with the vendor(s).
- Financial criteria
 - PTOs will approve the projected maximum cost per pupil in advance
 - Any cost above the per pupil limit agreed to by PTOs will be the responsibility of NPS
 - Cost per school is billed on projected enrollment
- After-school component
 - After-school events should be self-funded and not subsidized by school presentations
 - Location, date, and time should be disclosed in advance by PTOs and they have a reasonable time to provide feedback
 - Any vendor sales at the event must disclose any subsidies (e.g. vendor revenue share arrangements) to the alternate program funding

Appendix

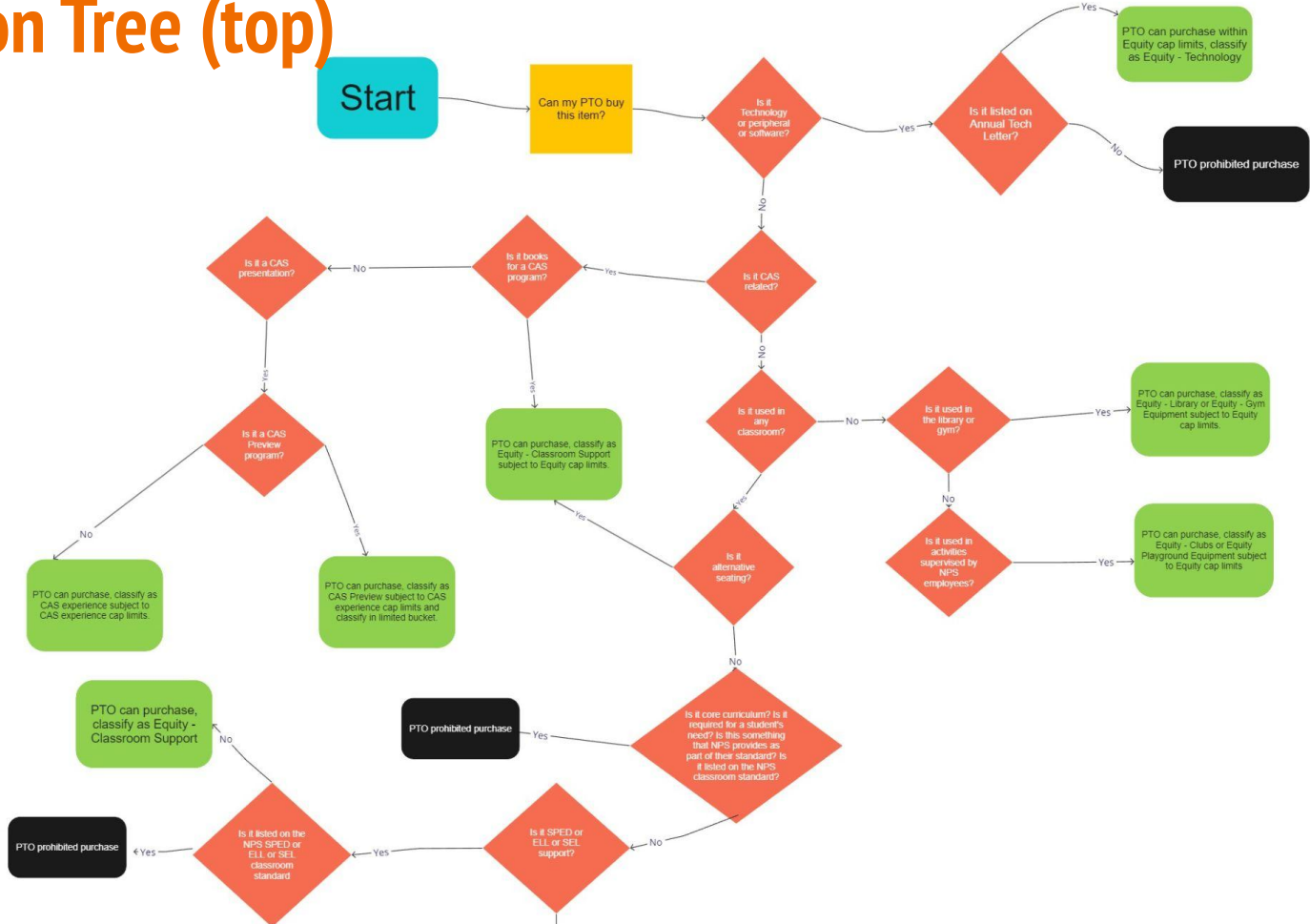
Recap of Accomplishments

- Renamed us the PTO Equity Spending Committee
- Clearly defined Curricular vs Non-Curricular
 - Curricular is the standard classroom contents that NPS provides
 - Non-curricular is anything else in the classroom
- Streamlined PTO reporting process
 - New CAS Experience reporting mechanism
 - Provides instant visibility for PTOs across Newton
 - Single input for PTO Budgets and Actuals
 - Allows instant visibility for all PTOs across Newton
- Implemented a Decision Tree model to adjudicate new spending items
- Streamlined the SC approval cycle for new guideline recommendations
- Made recommendations to NPS
 - Suggested NPS publish a curriculum standard to guide PTOs in prohibited spending.
 - Suggested NPS publish detailed gift policy and procedures to align parents, PTOs, and NPS employees

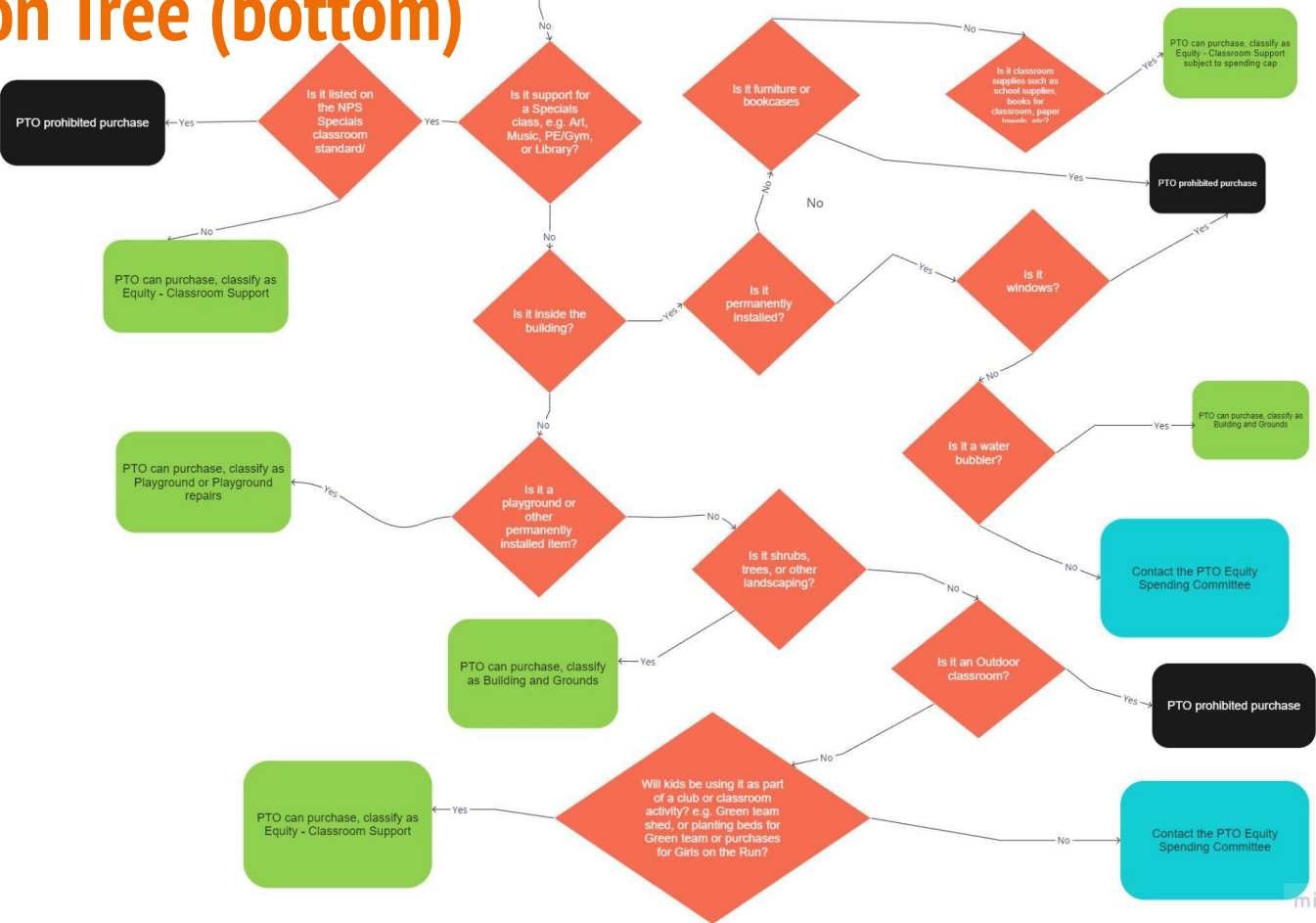
Recap of Accomplishments

- Created a comprehensive [PTO Equity Spending slide deck](#) for one stop education and reference including:
 - Treasurer compliance resources including IRS, State of MA, and SC policy links
 - Decision tree
 - Disclosed timeline of legislative cadence at SC with regard to Guidelines updates
 - Differences coming on July 1, 2023
 - Comprehensive list of recent PTO questions with responses
 - Philosophy of Equity Policy
 - CAS program definitions
 - Detailed slides with examples of Prohibited, Limited, and Unlimited category items
 - Historical summaries of PTO spending by school at elementary and secondary level

Decision Tree (top)



Decision Tree (bottom)



Unfinished Business

- The School Committee has not yet revised KCDE - Equity Policy per the committee's recommendation to narrow the focus to PTOs, as the policy was intended.
- The School Committee has not yet written a broader Equity Policy for the district, albeit NPS has their own Equity Policy.

File: KCDE – [PTO EQUITY SPENDING POLICY](#)

Economic disparity can lead to inequality in educational opportunities and experiences. The District will ensure that student educational experiences are equitable and not influenced by family income. District resources, which include technology, instructional materials, programming and staffing must be allocated equitably by the School Committee and Superintendent considering such factors as the number of classrooms in the school, the number of students in the school, and student/family needs. [The School Committee will periodically review NPS spending to ensure compliance with this policy.](#)

Similarly, the District will endeavor to provide all students with equitable enrichment opportunities and experiences, such as performances and lectures by outside organizations, student performances, field trips, etc. To address inequity in educational or enrichment opportunities, the Superintendent or designee will develop guidelines to ensure that parent/guardian organizations' spending is equitable from school to school over time. The guidelines will specify categories of items and activities in which outside organizations may provide resources and funding, categories of items and activities in which outside organization assistance is limited, and categories of items and activities in which outside resources or funding is prohibited.

A [PTO Equity Spending](#) Committee will be established and comprised of representatives from parent/guardian organizations, the Superintendent or designee and the School Committee in accordance with the guidelines. The [PTO Equity Spending](#) Committee will meet to periodically review the guidelines as well as monitor and ensure compliance with this policy.

CROSS REFS: [KCD](#), GIFTS AND DONATIONS

[KBE](#), RELATIONS WITH PARENT/BOOSTER ORGANIZATIONS