



School Committee
Meeting

COUNTRYSIDE ELEMENTARY SCHOOL

Newton, MA

Educational Program

Newton Public Schools Mission

To educate, prepare, and inspire all students to achieve their full potential as lifelong learners, thinkers, and productive contributors to our global society.



MSBA Process

Module 3 Activities - Feasibility Study:

Submit Preliminary Design Program (PDP)

- Educational program and Space Summary
- Existing conditions report
- Establish design parameters
- Develop and evaluate alternates

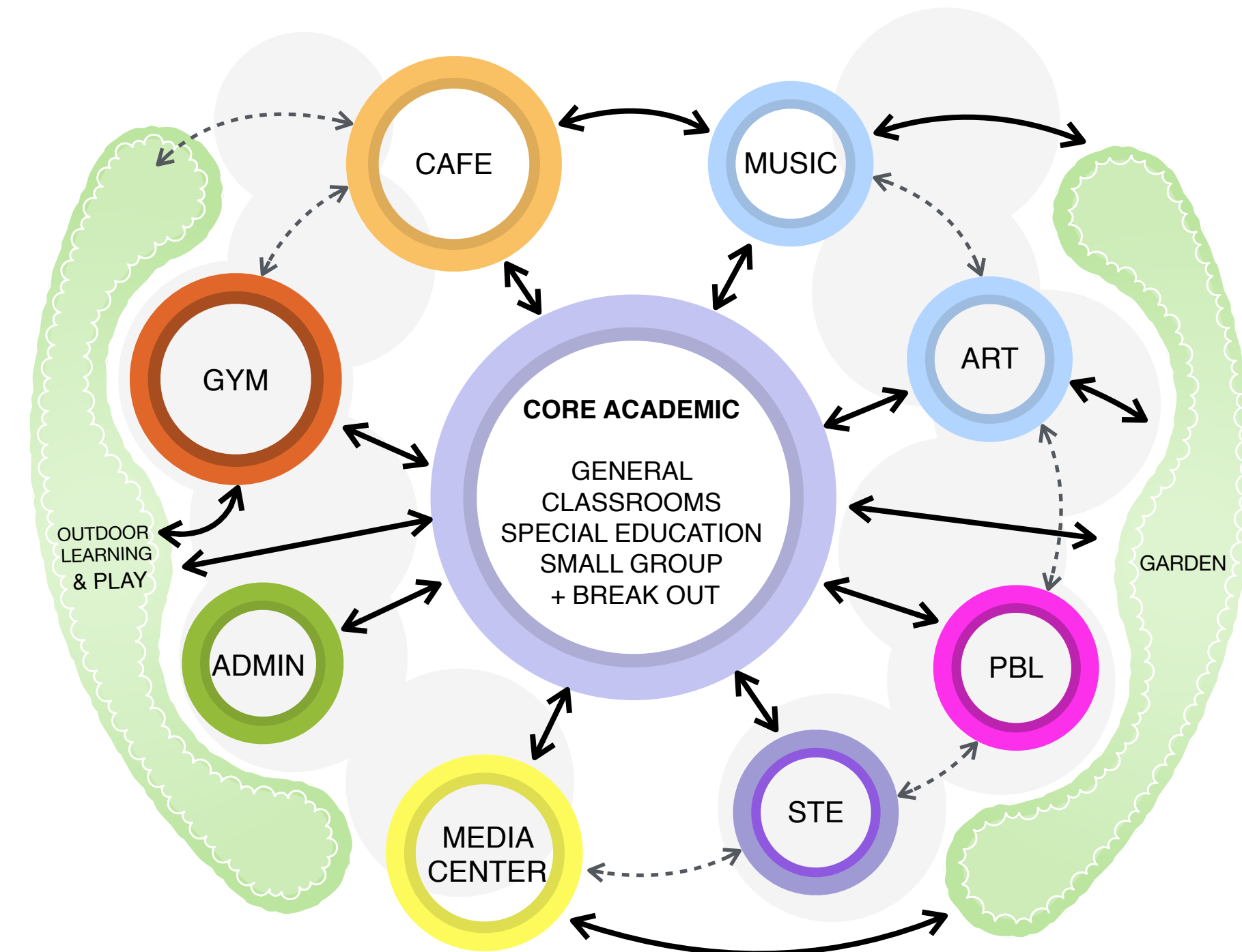
Preferred Schematic Report:

- Summarize the process and conclusions of the Preliminary and Final Evaluation of Alternatives
- Cost comparison table
- Document District's selection and recommendation of the most cost effective and educationally appropriate preferred solution to the MSBA
- Submit Preferred Schematic Report (PSR)



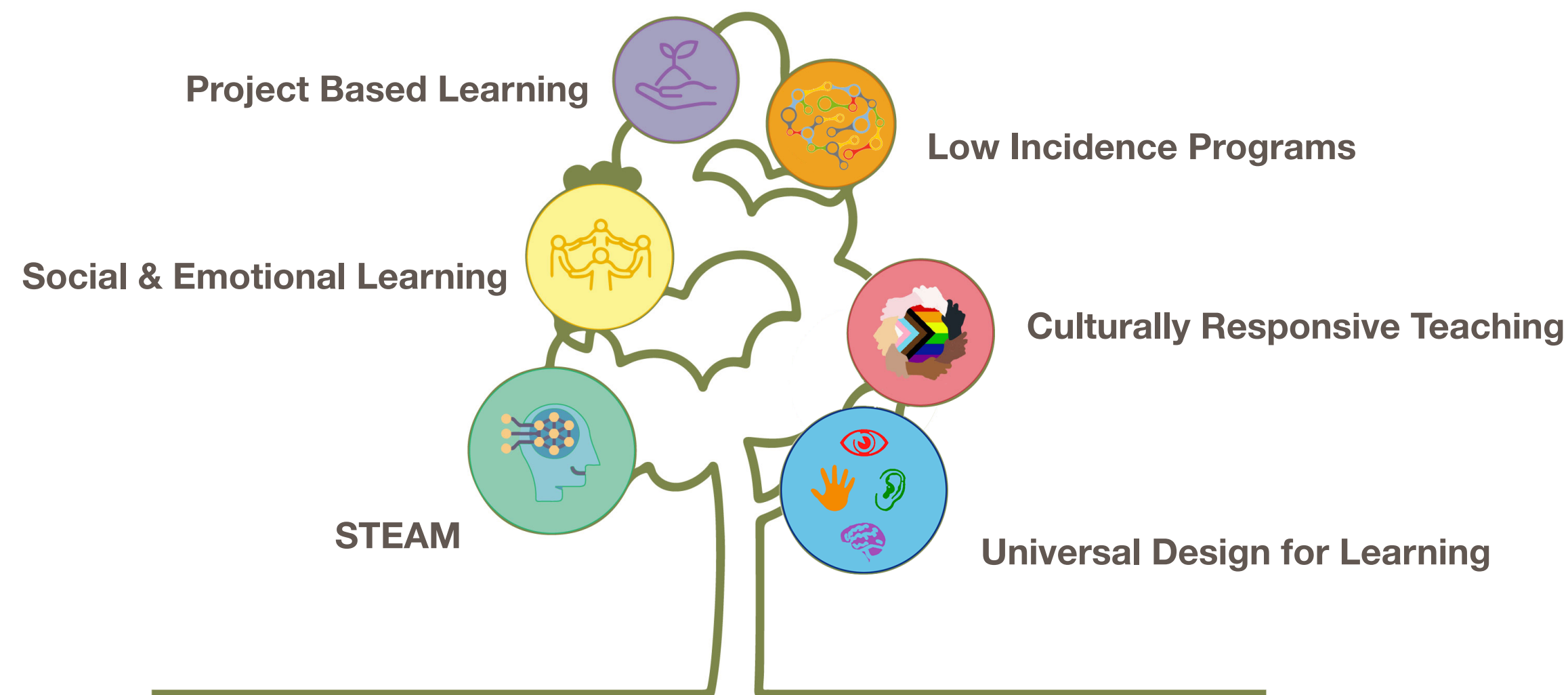
MSBA Process | Educational Program

- Identifies special education programs offered district-wide
- Identifies programs to be offered within the “new” Countryside School
- Identifies programmatic spatial relationships and adjacencies
- The program defines the space needs and total square footage for the project



Visioning Sessions | Educational Goals

- Student Centered Learning
- Personalized Learning and Support
- Inclusive and Differentiated Instruction
- Tiered Approach to Intervention
- Special Education Support
- Responsive Classroom Approach
- Multi-Sensory Approach
- Social-Emotional Learning
- Project-Based Learning
- Outdoor Learning and Connections
- Movement and Play
- Building School Community

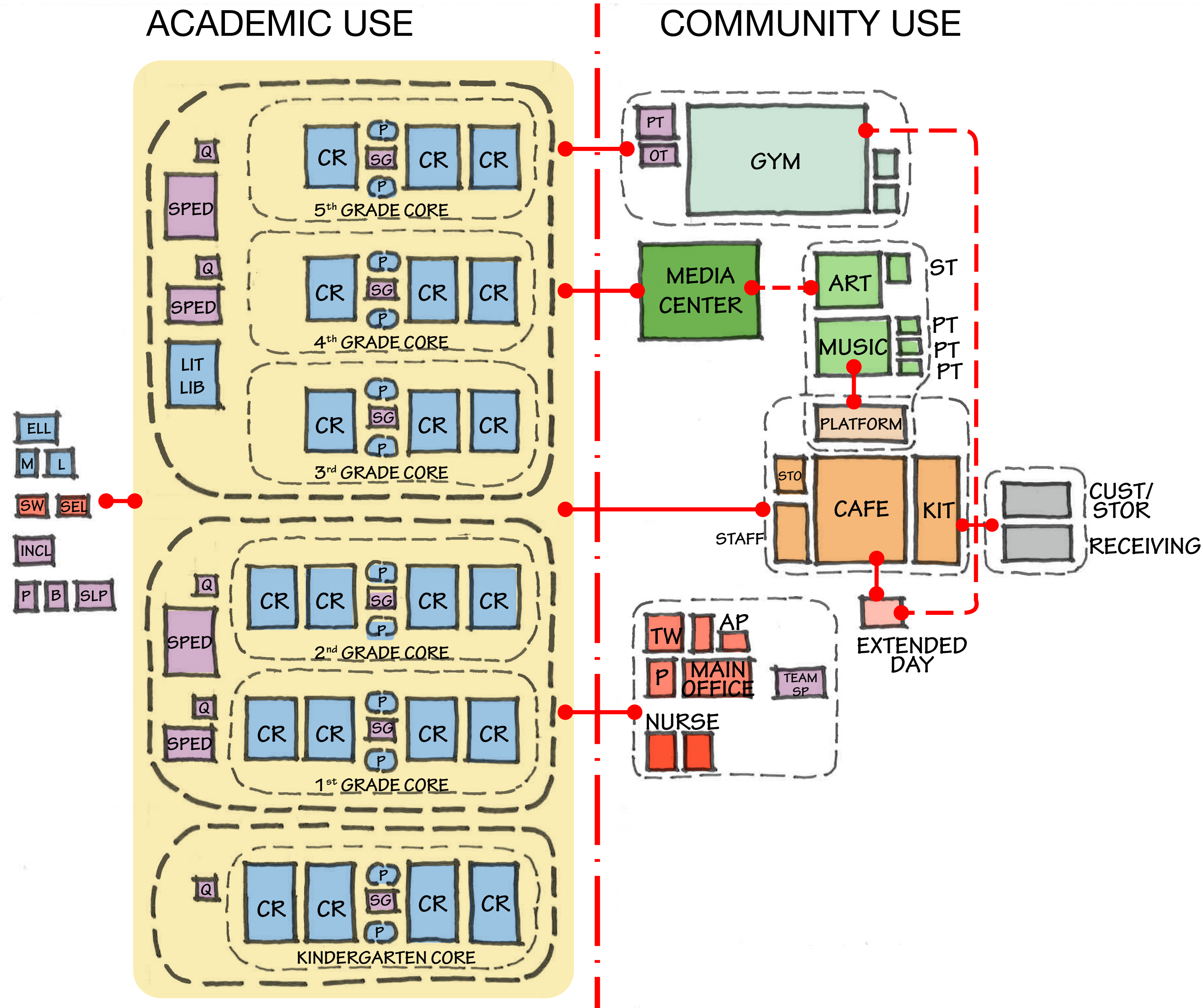


Visioning Sessions | Architectural Goals

- Warmth and Welcome
- Comfort, Flexibility and Safety
- Acoustics
- Wayfinding and Streetscapes
- Display and Exhibition
- Practicality and Durability
- Thoughtful Grade Level Configuration
- Classroom Neighborhoods
- Agile Classrooms
- Special Educational Spaces
- Enrichment Spaces
- Collaborative and Gathering Spaces
- Breakout and Quiet Spaces
- Connectivity
- Professional Work Areas
- Meeting and Small Group Spaces
- Outdoor Learning Spaces
- Sustainability



Spatial Relationships & Adjacencies



What we know:

1st floor

- Administration
- Cafetorium
- Gym
- Kindergarten Classrooms
- Receiving

To be determined:

Location of:

- Library
- Art Room
- Music Room

Site Priorities

- Main entry at drop off area
- Separate bus and parent drop off areas
- Cafetorium connected to play area
- Receiving area in proximity to kitchen
- Gym with access to fields

Preliminary Design Program | Enrollment Alternatives



Class Size Policies

Kindergarten through Second Grade	1 to 22 students
Third through Fifth Grade	1 to 24 students

Option 1 - 340 Student Enrollment

GOAL Class Size	K	1	2	3	4	5	Total
# Students (Average)	57	57	57	57	56	56	340
Average # students/class	22	22	22	24	24	24	
# of classrooms	2.59	2.59	2.59	2.37	2.37	2.37	14.88
Total Classrooms / Grade	3	3	3	3	2	2	16

- Average class size 21 - 22 students, respectively
- Provides flexibility for larger than typical grade

Option 2 - 465 Student Enrollment

GOAL Class Size	K	1	2	3	4	5	Total
# Students (Average)	78	78	78	77	77	77	465
Average # students/class	22	22	22	24	24	24	
# of classrooms	3.55	3.55	3.55	3.20	3.20	3.20	20.25
Total Classrooms / Grade	4	4	4	3	3	3	21

Preliminary Space Summary | 340 Student Enrollment

Program	Countryside Existing Conditions	Countryside Space Requirements	MSBA Guidelines	Differences	Comments
Core Academic	18,135 NFA	17,025 NFA	15,000 NFA	2,025 NFA	MSBA does not automatically include ELL, Lit / Math Specialists
Special Ed.	3,530 NFA	5,185 NFA	4,530 NFA	655 NFA	DESE reviews / approves Special Ed spaces
Art/Music	1,480 NFA	2,500 NFA	2,500 NFA	0 NFA	
Health & PE	2,545 NFA	6,300 NFA	6,300 NFA	0 NFA	
Media Center	1,265 NFA	2,200 NFA	2,200 NFA	0 NFA	
Dining (Cafe, Kitchen, Stage, Staff Dining)	4,785 NFA	5,703 NFA	5,703 NFA	0 NFA	Maximize size of cafetorium to accommodate any future expansion
Medical / Admin	1,120 NFA	2,440 NFA	2,565 NFA	-125 NFA	May require slightly more space depending on final layout
Custodial / Main	105 NFA	1,750 NFA	1,940 NFA	-190 NFA	May require slightly more space depending on final layout
Other (Extended Day)	765 NFA	250 NFA	0 NFA	250 NFA	MSBA does not reimburse for "other" spaces
Sub Total Program	33,730 NFA	43,353 NFA	40,738 NFA	2,615 NFA	
Total Gross Sq. Ft. (GSF) (Gross SF / NFA = 1.5)	56,100 GSF	65,030 GSF	59,613 GSF	3,923 GSF	

Preliminary Space Summary | 465 Student Enrollment

Program	Countryside Existing Conditions	Countryside Space Requirements	MSBA Guidelines	Differences	Comments
Core Academic	18,135 NFA	21,875 NFA	20,950 NFA	925 NFA	MSBA does not automatically include ELL, Lit / Math Specialists
Special Ed.	3,530 NFA	5,860 NFA	5,540 NFA	320 NFA	DESE reviews / approves Special Ed spaces
Art/Music	1,480 NFA	2,575 NFA	2,575 NFA	0 NFA	
Health & PE	2,545 NFA	6,300 NFA	6,300 NFA	0 NFA	
Media Center	1,265 NFA	2,763 NFA	2,763 NFA	0 NFA	
Dining (Cafe, Kitchen, Stage, Staff Dining)	4,785 NFA	6,350 NFA	6,823 NFA	-473 NFA	<ul style="list-style-type: none"> • 3 seatings vs 2 seatings • Smaller kitchen per Angier design
Medical / Admin	1,120 NFA	2,585 NFA	2,840 NFA	-255 NFA	May require slightly more space depending on final layout
Custodial / Main	105 NFA	1,830 NFA	2,065 NFA	-235 NFA	May require slightly more space depending on final layout
Other (Extended Day)	765 NFA	250 NFA	0 NFA	250 NFA	MSBA does not reimburse for “other” spaces
Sub Total Program	33,730 NFA	50,388 NFA	49,856 NFA	532 NFA	
Total Gross Sq. Ft. (GSF) (Gross SF / NFA = 1.5)	56,100 GSF	75,582 GSF	74,749 GSF	798 GSF	

Preliminary Space Summary | Enrollment Comparison

Program	340 Students @ MSBA Standards	340 Students MSBA Guidelines	465 Students @ MSBA Standards	465 Students MSBA Guidelines	Comments
Core Academic	17,025 NFA	15,000 NFA	21,875 NFA	20,950 NFA	MSBA does not automatically include ELL, Lit / Math Specialists
Special Ed.	5,185 NFA	4,530 NFA	5,860 NFA	5,540 NFA	DESE reviews / approves Special Ed spaces
Art/Music	2,500 NFA	2,500 NFA	2,575 NFA	2,575 NFA	
Health & PE	6,300 NFA	6,300 NFA	6,300 NFA	6,300 NFA	
Media Center	2,200 NFA	2,200 NFA	2,763 NFA	2,763 NFA	
Dining (Cafe, Kitchen, Stage, Teacher Dining)	5,703 NFA	5,703 NFA	6,350 NFA	6,823 NFA	465 Enrollment: • 3 vs 2 seatings; Smaller kitchen (Angier)
Medical / Admin	2,440 NFA	2,565 NFA	2,585 NFA	2,840 NFA	May require slightly more space depending on final layout
Custodial / Main	1,750 NFA	1,940 NFA	1,830 NFA	2,065 NFA	May require slightly more space depending on final layout
Other (Extended Day)	250 NFA	0 NFA	250 NFA	0 NFA	MSBA does not reimburse for “other” spaces
Sub Total Program	43,353 NFA	40,738 NFA	50,388 NFA	49,856 NFA	
Total Gross Sq. Ft. (GSF) (Gross SF / NFA = 1.5)	65,030 GSF	59,613 GSF	75,582 GSF	74,749 GSF	

Next Steps

- School Building Committee Meeting December 20, 2022
- School Committee Meeting January 9, 2023
- Community Forum (Tentative) Week of January 9, 2023
- School Building Committee Meeting January 17, 2023
- Submit PDP to MSBA January 18, 2022
- Submit Preferred Schematic Report to MSBA April, 27, 2023
- MSBA Board Vote of Preferred Solution June 21, 2023





School Committee
Meeting

COUNTRYSIDE ELEMENTARY SCHOOL

Newton, MA

Preliminary Space Summary | 340 Student Enrollment

Countryside Elementary 340 Students (16 classrooms)				PROPOSED			Difference to MSBA Guidelines			Date: <input type="text"/> Enter Date <input type="text"/> Enter Submittal			
ROOM TYPE	Existing Conditions			Total			Guidelines			MSBA Guidelines (refer to MSBA Educational Program & Space Standard Guidelines)			
	ROOM NFA ¹	# OF RMS	area totals	ROOM NFA ¹	# OF RMS	area totals	ROOM NFA1	# OF RMS	area totals	ROOM NFA ¹	# OF RMS	area totals	Comments
CORE ACADEMIC SPACES			18,135	17,025			2,025			15 15,000			
<i>(List classrooms of different sizes separately)</i>													
Pre-Kindergarten w/ toilet					0	0		0	0	1,200		-	1,100 SF min - 1,300 SF max
Kindergarten w/ toilet	915	3	2,745	1,125	3	3,375		0	-225	1,200	3	3,600	1,100 SF min - 1,300 SF max; 2 sinks min. req
K Project Area				25	3	75		3	75				
General Classrooms - Grade 1-6	790	1	790	900	13	11,700		1	300				900 SF min - 1,000 SF max; 2 sinks min. req
General Classrooms - Grade 1-6	845	10	8,450										
General Classrooms - Grade 1-6	850	1	850										
General Classrooms - Grade 1-6	885	1	885										
General Classrooms - Grade 1-6	900	1	900										
General Classrooms - Grade 1-6	915	2	1,830										
General Classroom Project Area				25	13	325		13	325				
STE Room- Grade 3-6	0	0	0	0	0	0				1,080			Refer to STE Guidelines for Additional information
STE Storage	0	0	0	0	0	0				120			Refer to STE Guidelines for Additional information
ELL Program	840	1	840	300	1	300		1	300				
Professional Literacy Center	0	0	0	925	1	925		1	925				
Math Coach	Shared with BCBA / Team Specialist			150	1	150		1	150				
Literacy Specialists	845	1	845	175	1	175		1	175				
SPECIAL EDUCATION			3,530	5,185			655			4,530			
<i>(List rooms of different sizes separately)</i>													
Self-Contained SPED SPARK	790	1	790	900	2	1,800		-1	-1,050	950	3	2,850	900-1,300 SF equal to surrounding classrooms
Self-Contained SPED SPARK	845	1	845	60	1	60		-2	-120	60	3	180	
Self-Contained SPED - toilet in lower SPARK	0	0	0	450	2	900		0	-100	500	2	1,000	1/2 size Genl. Clrm.
Resource Room / Special Ed Teaching Space	245	1	245	125	3	375		2	-125	500	1	500	1/2 size Genl. Clrm.
Small Group Room / Reading - 1 / 2 grade (breakout)	0	0	0	200	1	200		1	200				
OT	120	1	120	450	1	450		1	450				
PT	Shared with OT			100	3	300		3	300				
Quiet Room 1 / academic floor	55	1	55	150	1	150		1	150				
Speech + Language	120	1	120	250	1	250		1	250				
Inclusion Facilitators (office for 6 adults)	720	1	720	400	1	400		1	400				
Team Specialist + IEP Conference Room (12 adults)	180	1	180	150	1	150		1	150				
Psychologist (office, testing, therapy, storage)	115	1	115	150	1	150		1	150				
BCBA	245	1	245	150	1	150		1	150				

Preliminary Space Summary | 340 Student Enrollment

Countryside Elementary 340 Students (16 classrooms)		Existing Conditions	
ART & MUSIC			1,480
Art Classroom - 25 seats	1,000	1	1,000
Art Workroom w/ Storage & kiln	90	1	90
Music Classroom / Large Group - 25-50 seats	390	1	390
Music Practice / Ensemble	0	0	0
HEALTH & PHYSICAL EDUCATION			2,545
Gymnasium	2,440	1	2,440
Gym Storeroom	105	1	105
Health Instructor's Office w/ Shower & Toilet	0	0	0
MEDIA CENTER			1,265
Media Center / Reading Room	1,265	1	1,265
DINING & FOOD SERVICE			4,785
Cafeteria / Dining	2,820	1	2,820
Stage	935	1	935
Chair / Table / Equipment Storage	0	0	0
Kitchen	470	1	470
Staff Lunch Room	560	1	560
MEDICAL			275
Medical Suite Toilet	275	1	275
Nurses' Office / Waiting Room			
Examination Room / Resting			
ADMINISTRATION & GUIDANCE			955
General Office / Waiting Room / Toilet	410	1	410
Teachers' Mail and Time Room	Included in General Office		
Duplicating Room	110	1	110
Records Room	Included in General Office		
Principal's Office w/ Conference Area	175	1	175
Principal's Secretary / Waiting	Included in General Office		
Assistant Principal's Office	0	0	0
Supervisory / Spare Office / Itinerant Staff (was Extended Day - moved to other)	0	0	0
Conference Room	145	1	145
Guidance Office	0	0	0
Guidance Storeroom	0	0	0
Teachers' Work Room	Included in Staff Lunch Room		
Staff Lactation Room			
Social Worker (Office, testing, conferences)	115	1	115
SEL Coach / Intervention	Shared with Inclusion		

PROPOSED		
Total		
		2,500
1,000	1	1,000
150	1	150
1,200	1	1,200
75	2	150
		6,300
6,000	1	6,000
150	1	150
150	1	150
		2,200
2,200	1	2,200
		5,703
2,550	1	2,550
1,000	1	1,000
313	1	313
1,640	1	1,640
200	1	200
		510
60	1	60
250	1	250
100	2	200
		1,930
600	1	600
Included in General Office		
80	1	80
300	1	300
Included in General Office		
0	0	0
0	0	0
200	1	200
0	0	0
0	0	0
200	2	400
50	1	50
150	1	150
150	1	150

Difference to MSBA Guidelines	
	0
0	0
0	0
0	0
0	0
	0
0	0
0	0
0	0
	0
0	0
0	0
0	0
0	0
	0
0	0
0	0
0	0
	0
0	0
0	0
0	0
	0
0	280
-1	-100
-1	-150
0	-30
0	-75
-1	-125
0	0
-1	-120
0	-50
-1	-150
-1	-35
1	80
1	50
1	150
1	150

Date: Enter Date Enter Submittal			
MSBA Guidelines (refer to MSBA Educational Program & Space Standard Guidelines)			
			2,500
1,000	1	1,000	assumed schedule 2 times / week / student
150	1	150	
1,200	1	1,200	assumed schedule 2 times / week / student
75	2	150	
			6,300
6,000	1	6,000	6000 SF Min. Size
150	1	150	
150	1	150	
			2,200
2,200	1	2,200	
			5,703
2,550	1	2,550	2 seatings - 15SF per seat
1,000	1	1,000	
313	1	313	
1,640	1	1,640	1600 SF for first 300 + 1 SF/student Add'l
200	1	200	20 SF/Occupant
			510
60	1	60	
250	1	250	
100	2	200	
			2,055
320	1	320	
100	1	100	
150	1	150	
110	1	110	
375	1	375	
125	1	125	
120	0	-	
120	1	120	
250	1	250	
150	1	150	
35	1	35	
320	1	320	

Preliminary Space Summary | 340 Student Enrollment

Countryside Elementary 340 Students (16 classrooms)		
Existing Conditions		
Teachers' Work Room	Included in Staff Lunch Room	
Staff Lactation Room		
Social Worker (Office, testing, conferences)	115	1
SEL Coach / Intervention	Shared with Inclusion	
CUSTODIAL & MAINTENANCE		0
Custodian's Office		
Custodian's Workshop		
Custodian's Storage		
Recycling Room / Trash		
Receiving and General Supply		
Storeroom		
Network / Telecom Room		
OTHER		765
Other (specify) Extended Day	765	1
Total Building Net Floor Area (NFA)		33,735
Proposed Student Capacity / Enrollment		
NON-PROGRAMMED SPACES		22,365
Remaining ³		
Total Building Gross Floor Area (GFA) ²		56,100
Original building + addition	50,700	
Portable Classrooms	5,400	
Grossing factor (GFA/NFA)		1.66

PROPOSED		
Total		
200	2	400
50	1	50
150	1	150
150	1	150
		1,750
150	1	150
0	1	0
500	1	500
700	1	700
Included above		
75	2	150
250	1	250
		250
250	1	250
		43,353
% of GFA		21,677
33%		21,677
		65,030
		1.50

Difference to MSBA Guidelines	
80	-190
50	-375
150	125
150	300
-213	-213
-77	-77
50	250
250	
250	250
2,615	
5,416	

MSBA Guidelines (refer to MSBA Educational Program & Space Standard Guidelines)		
Date: Enter Date	Enter Submittal	
320	1	320
		1,940
150	1	150
375	1	375
375	1	375
400	1	400
213	1	213
227	1	227
200	1	200
		0
		40,738
		340 Enter grade enrollments below
		170 Lower Elementary; Grades K-2
		170 Upper Elementary; Grades 3-6
		59,613
		1.46

Preliminary Space Summary | 465 Student Enrollment

Countryside Elementary 465 Students (21 classrooms)		Existing Conditions	
ART & MUSIC		1,480	
Art Classroom - 25 seats	1,000	1	1,000
Art Workroom w/ Storage & kiln	90	1	90
Music Classroom / Large Group - 25-50 seats	390	1	390
Music Practice / Ensemble	0	0	0
HEALTH & PHYSICAL EDUCATION		2,545	
Gymnasium	2,440	1	2,440
Gym Storeroom	105	1	105
Health Instructor's Office w/ Shower & Toilet	0	0	0
MEDIA CENTER		1,265	
Media Center / Reading Room	1,265	1	1,265
DINING & FOOD SERVICE		4,785	
Cafeteria / Dining	2,820	1	2,820
Stage	935	1	935
Chair / Table / Equipment Storage	0	0	0
Kitchen	470	1	470
Staff Lunch Room	560	1	560
MEDICAL		275	
Medical Suite Toilet	275	1	275
Nurses' Office / Waiting Room			
Examination Room / Resting			
ADMINISTRATION & GUIDANCE		845	
General Office / Waiting Room / Toilet	410	1	410
Teachers' Mail and Time Room	Included in General Office		
Duplicating Room	0	0	0
Records Room	Included in General Office		
Principal's Office w/ Conference Area	175	1	175
Principal's Secretary / Waiting	Included in General Office		
Assistant Principal's Office	0	0	0
Supervisory / Spare Office / Itinerant Staff (was Extended Day - moved to other)			
Conference Room	145	1	145
Guidance Office	0	0	0
Guidance Storeroom	0	0	0
Teachers' Work Room	Included in Staff Lunch Room		
Staff Lactation Room			
Social Worker (Office, testing, conferences) Moved from S	115	1	115
SEL Coach / Intervention	Shared with Inclusion		

PROPOSED		
Total		
		2,575
1,000	1	1,000
150	1	150
1,200	1	1,200
75	3	225
		6,300
6,000	1	6,000
150	1	150
150	1	150
		2,763
2,763	1	2,763
		6,350
3,035	1	3,035
1,000	1	1,000
355	1	355
1,460	1	1,460
250	2	500
		510
60	1	60
250	1	250
100	2	200
		2,075
600	1	600
Included in General Office		
Included in General Office		
80	1	80
300	1	300
Included in General Office		
125	1	125
0	0	0
220	1	220
0	0	0
0	0	0
200	2	400
50	1	50
150	1	150
150	1	150

Difference to MSBA Guidelines	
0	
0	0
0	0
0	0
0	0
0	
0	0
0	0
0	0
1	
0	1
-474	
0	-453
0	0
0	0
0	-305
1	284
0	
0	0
0	0
0	0
-255	
0	218
-1	-100
-1	-150
0	-30
0	-75
-1	-125
1	125
-1	-120
0	-30
-2	-300
-1	-35
1	18
1	50
1	150
1	150

Date: Enter Date Enter Submittal			
MSBA Guidelines (refer to MSBA Educational Program & Space Standard Guidelines)			
		2,575	
1,000	1	1,000	assumed schedule 2 times / week / student
150	1	150	
1,200	1	1,200	assumed schedule 2 times / week / student
75	3	225	
		6,300	Excess PE Spaces Policy
6,000	1	6,000	6000 SF Min. Size
150	1	150	
150	1	150	
		2,763	
2,763	1	2,763	
		6,824	
3,488	1	3,488	2 seatings - 15SF per seat
1,000	1	1,000	
355	1	355	
1,765	1	1,765	1600 SF for first 300 + 1 SF/student Add'l
216	1	216	20 SF/Occupant
		510	
60	1	60	
250	1	250	
100	2	200	
		2,330	
383	1	383	
100	1	100	
150	1	150	
110	1	110	
375	1	375	
125	1	125	
120	0	-	
120	1	120	
250	1	250	
150	2	300	
35	1	35	
383	1	383	

Preliminary Space Summary | 465 Student Enrollment

Countryside Elementary 465 Students (21 classrooms)		Existing Conditions	
CUSTODIAL & MAINTENANCE			105
Custodian's Office			
Custodian's Workshop			
Custodian's Storage			
Recycling Room / Trash			
Receiving and General Supply			
Storeroom	105	1	105
Network / Telecom Room			
OTHER			765
Other (specify) Extended Day (Reduced no K lunch)	765	1	765
Total Building Net Floor Area (NFA)			33,730
Proposed Student Capacity / Enrollment			
NON-PROGRAMMED SPACES			22,370
Remaining ³			
Total Building Gross Floor Area (GFA) ²			56,100
Original building + addition	50,700		
Portable Classrooms	5,400		
Grossing factor (GFA/NFA)			1.66

PROPOSED			
Total			
			1,830
100	1		100
0	1		0
580	1		580
750	1		750
Included above			
75	2		150
250	1		250
			250
250	1		250
			50,388
% of GFA			25,194
33%			25,194
			75,582
			1.50

Difference to MSBA Guidelines	
	-235
0	-50
0	-375
0	205
0	350
-1	-255
1	-160
0	50
250	
1	250
532	
833	

Date: Enter Date Enter Submittal			
MSBA Guidelines (refer to MSBA Educational Program & Space Standard Guidelines)			
		2,065	
150	1	150	
375	1	375	
375	1	375	
400	1	400	
255	1	255	
310	1	310	
200	1	200	
		0	
		49,856	
		465	Enter grade enrollments below
		232	Lower Elementary; Grades K-2
		233	Upper Elementary; Grades 3-6
		24,893	
		74,749	
		1.50	

Preliminary Space Summary | Elementary School Comparisons

Newton Program Comparisons

6-Dec-22

ROOM TYPE	COMPLETED									PROPOSED - DRAFT		
	Angier (90% CDs) 465 Students (22 Gen Ed)			Zervas (14-10-09) 490 Students			Cabot (90% CDs) 480 Students			Countryside (PDP) 465 Students		
	ROOM NFA ¹	# OF RMS	area totals	ROOM NFA ¹	# OF RMS	area totals	ROOM NFA ¹	# OF RMS	area totals	ROOM NFA ¹	# OF RMS	area totals
CORE ACADEMIC SPACES		22	22,734		28	24,600		28	26,266		21	21,875
<i>(List classrooms of different sizes seperately)</i>												
Pre-Kindergarten w/ toilet												
Kindergarten w/ toilet (includes project areas)	1,131	4	4,524	1,200	4	4,800	1,257	4	5,028	1,150	4	4,600
General Classrooms - Grade 1-5 (Inc. project areas)	925	18	16,650	925	20	18,500	986	20	19,720	925	17	15,725
General Classrooms - Grade 1-5												
ELL Program	298	1	298	150	1	150	316	1	316	300	1	300
Reading Program / Literacy Room	925	1	925	900	1	900	638	1	638	925	1	925
Math Coach	161	1	161	125	1	125	248	1	248	150	1	150
Literacy Specialist	176	1	176	125	1	125	316	1	316	175	1	175
SPECIAL EDUCATION			4,552			4,200			4,997			5,860
<i>(List rooms of different sizes seperately)</i>												
Self-Contained SPED	925	1	925	900	1	900	430	3	1,290	900	2	1,800
Self-Contained SPED - toilet	0	0	0	0	0	0	0	0	0	60	1	60
Learning Centers (K-2; 3-5)	470	2	940	450	2	900	434	2	868	450	2	900
Breakout Rooms (individual instruction) 1/grade (Ave)	121	7	845	125	6	750	140	7	980	125	6	750
OT/PT	511	1	511	450	1	450	413	1	413	200	1	200
PT (Countryside splits OT + PT)	Included above			Included above			Included above			450	1	450
Quiet Room 1 / academic floor	106	2	212	100	2	200	100	2	200	100	3	300
Speech + Language	298	1	298	150	2	300	305	1	305	150	2	300
Inclusion Facilitators	238	1	238	150	1	150	477	1	477	200	2	400
Team Specialist + IEP Conference Room	428	1	428	400	1	400	300	1	300	400	1	400
Psychologist (office, testing, therapy, storage)	155	1	155	150	1	150	164	1	164	150	1	150
BCBA	0	0	0	0	0	0	0	0	0	150	1	150
ART & MUSIC			2,608			2,725			2,587			2,575
Art Classroom - 25 seats	1,000	1	1,000	1,000	1	1,000	966	1	966	1,000	1	1,000
Art Workroom w/ Storage & kiln	178	1	178	150	1	150	191	1	191	150	1	150
Music Classroom / Large Group - 25-50 seats	1,168	1	1,168	1,200	1	1,200	1,226	1	1,226	1,200	1	1,200
Music Practice/ Ensemble (Groups 4 - 10 students)	162	1	162	150	2	300	153	1	153	75	3	225
Music Practice/ Ensemble (Groups 4 - 10 students)	100	1	100	75	1	75	51	1	51			

Preliminary Space Summary | Elementary School Comparisons

Newton Program Comparisons

6-Dec-22

	COMPLETED						PROPOSED - DRAFT					
	Angier (90% CDs) 465 Students (22 Gen Ed)			Zervas (14-10-09) 490 Students			Cabot (90% CDs) 480 Students			Countryside (PDP) 465 Students		
HEALTH & PHYSICAL EDUCATION	6,105			6,300			6,118			6,300		
Gymnasium	5,809	1	5,809	6,000	1	6,000	5,834	1	5,834	6,000	1	6,000
Gym Storeroom	176	1	176	200	1	200	147	1	147	150	1	150
Health Instructor's Office w/Shower & Toilet	120	1	120	100	1	100	137	1	137	150	1	150
MEDIA CENTER	2,770			2,875			2,810			2,763		
Media Center/Reading Room	2,770	1	2,770	2,875	1	2,875	2,810	1	2,810	2,763	1	2,763
DINING & FOOD SERVICE	6,321			6,663			7,108			6,350		
Cafeteria/Dining	3,035	1	3,035	3,200	1	3,200	3,386	1	3,386	3,035	1	3,035
Stage - existing used as SPED	950	1	950	1,000	1	1,000	1,000	1	1,000	1,000	1	1,000
Chair/Table/Equipment Storage	408	1	408	363	1	363	381	1	381	355	1	355
Kitchen	1,460	1	1,460	1,600	1	1,600	1,841	1	1,841	1,460	1	1,460
Staff Lunch Room (1/3 of staff = 60 staff/3)	234	2	468	250	2	500	250	2	500	250	2	500
MEDICAL	569			510			733			510		
Medical Suite Toilet	73	1	73	60	1	60	54	1	54	60	1	60
Nurses' Office/Waiting Room	306	1	306	250	1	250	101	1	101	250	1	250
Examination Room / Resting	95	2	190	100	2	200	289	2	578	100	2	200
ADMINISTRATION & GUIDANCE	2,456			2,665			2,780			2,075		
General Office / Waiting Room/Toilet	750	1	750	680	1	680	458	1	458	650	1	650
Teachers' Mail and Time Room	Included in General Office			Included in General Office			Included in General Office			Included in General Office		
Duplicating Room	Included in General Office			Included in General Office			127	1	127	Included in General Office		
Records Room	79	1	79	60	1	60	60	1	60	80	1	80
Principal's Office w/ Conference Area	301	1	301	300	1	300	305	1	305	300	1	300
Principal's Secretary / Waiting	Included in General Office			Included in General Office			Included in General Office			Included in General Office		
Assistant Principal's Office	117	1	117	125	1	125	121	1	121	125	1	125
Supervisory / Itinerant Teachers (Extended Day)	428	1	428	650	1	650	786	1	786	0	0	0
Conference Room	218	1	218	200	1	200	247	1	247	220	1	220
Guidance Office	0	0	0	0	0	0	0	0	0	0	0	0
Guidance Storeroom	0	0	0	0	0	0	0	0	0	0	0	0
Storeroom	0	0	0	0	0	0	200	1	200	0	0	0
Teachers' Work Room	206	2	412	250	2	500	161	2	322	200	2	400
Social Worker (Office, testing, conferences)	151	1	151	150	1	150	154	1	154	150	1	150
SEL Coach / Intervention	0	0	0	0	0	0	0	0	0	150	1	150

Preliminary Space Summary | Elementary School Comparisons

Newton Program Comparisons

6-Dec-22

	COMPLETED						PROPOSED - DRAFT					
	Angier (90% CDs) 465 Students (22 Gen Ed)			Zervas (14-10-09) 490 Students			Cabot (90% CDs) 480 Students			Countryside (PDP) 465 Students		
CUSTODIAL & MAINTENANCE	1,785			1,865			2,157			1,830		
Custodian's Office	102	1	102	125	1	125	106	1	106	100	1	100
Custodian's Workshop	0	0	0	0	0	0	175	1	175	0	1	0
Custodian's Storage	583	1	583	147	3	440	63	4	252	580	1	580
Recycling Room / Trash	712	1	712	650	1	650	1,327	1	1,327	750	1	750
Receiving and General Supply	Included above			Included above			Included above			Included above		
Storeroom	78	2	156	200	2	400	81	1	81	75	2	150
Network/Telecom Room	232	1	232	250	1	250	216	1	216	250	1	250
OTHER	0			0			0			250		
Other (specify) Extended Day	In Administration			In Administration			In Administration			250	1	250
Total Building Net Floor Area (NFA)	49,900			52,403			55,556			50,388		
Proposed Student Capacity/Enrollment	465			490			480			465		
Total Building Gross Floor Area (GFA) ²	74,960			78,800			83,334			75,582		
Grossing factor (GFA/NFA)	1.50			1.50			1.50			1.50		